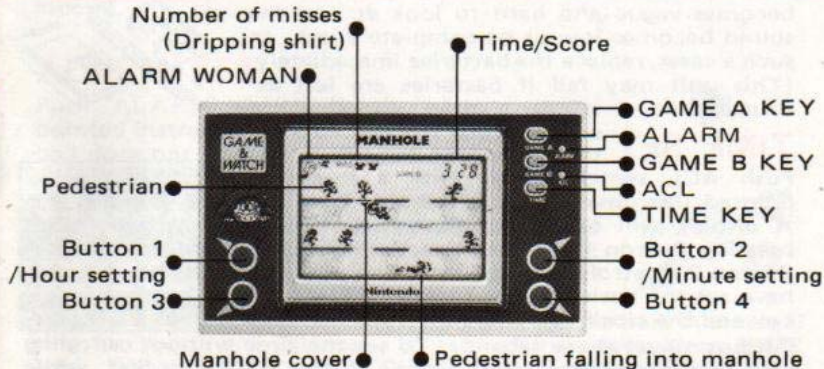


ELECTRONIC GAME & WATCH™

MANHOLE™ (NH-103)

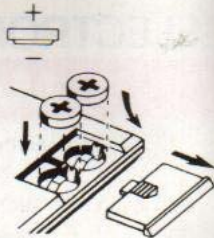


© Nintendo 1983

INSERTING THE BATTERIES

Insert two LR44 or SR44 batteries into battery compartment with the positive electrode atop.

When the batteries are exhausted, the display becomes vague and hard to look at, and the sound becomes low or be completely lost. In such a cases, replace the batteries immediately. (This unit may fail if batteries are left exhausted.)



TIME SET

Push ACL switch lightly with a sharp-pointed instrument. Do not hold down. A display will appear as illustrated. By pressing Button 1, you control the hours. Button 2 controls the minutes. When you have set the desired time, press the TIME key and the clock will start.



Pattern moves every second. To set the time without canceling max. score or alarm time setting, press TIME key and, while holding it in, press and release ALARM switch.

(If ACL switch is pressed for extended period of time, battery life is shortened considerably.)

By pressing Button 1, you will control the hours. Button 2 controls the minutes. When you have set the desired time, press the TIME button and the clock will start. Pattern moves every second.

ALARM SET

Push ALARM switch lightly with a sharp-pointed instrument. A bell should appear. (If a bell does not appear, push again.) Alarm is set when bell is on the screen.

By pressing Button 1 or 3, you will control the hours. Button 2 or 4 control the minutes. After setting numbers in above manner, push TIME key to set the alarm time. Check AM/PM of time.

When pre-set alarm time arrives, woman rings the bell. Alarm will ring for about one minute. To turn off manually, press TIME key. (When GAME & WATCH is in game mode at alarm time, woman will shake the bell without sound.)

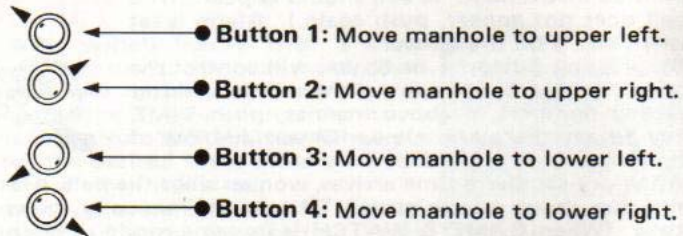


Push TIME key to check the alarm time. It is indicated while the key is depressed.

HOW TO PLAY

There are four manholes and only one manhole cover. Pedestrians come one after another. To prevent them from falling into the manhole, move the cover quickly.

(Control Button)



(The Beginning of The Game)

Press the Game key A or B, and highest previous score in Game A or B will be displayed. When key is released, game starts.

- * Pressing ACL switch or removing batteries erases high score from memory.
- * A game is not interrupted even if TIME key or other game key is depressed during game playing.
- * Game A is for beginners and average players. Game B is for the pros. In Game B, it requires more coordination, technique and timing.

(Points)

When pedestrian passes four manholes without falling into, a point is scored.

(Misses)

If a manhole is not covered in time, pedestrian falls into and a miss is scored.

Three misses and the game is over.

Time is automatically displayed about four minutes after game is over.

(Bonus)

When the score reaches 300 points, fanfare sounds and all misses are canceled. **If there are no misses** when a 300 score is reached, game goes into "CHANCE TIME". During the Chance Time, score flashes and all points are awarded at double value until a miss is scored.

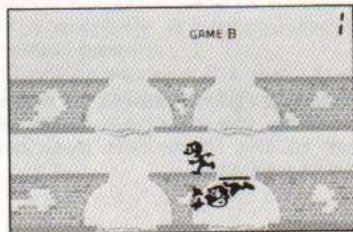
THE OPERATION OF CONTROL BUTTONS



When a game starts, a man holding the manhole cover is set to the lower left position on the screen.



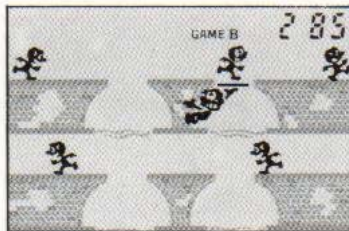
To prevent pedestrian from falling into, move manhole cover to the right manhole quickly.



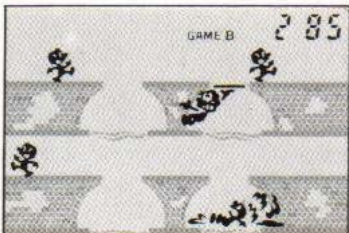
Pedestrian passes the manhole and walks to the next manhole.



Move manhole cover to the next manhole.



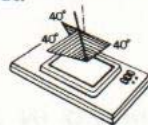
With a higher score, the number of pedestrians increases. The more pedestrians, the quicker you must operate the control button.



If manhole is not covered in time, pedestrian falls in and a miss is scored.

CAUTIONS

1. Do not use pencil or pin when pressing ACL or ALARM switch.
2. This unit is made of precise electronic components. Avoid storing or playing the unit in extreme temperatures. Avoid dropping unit.
3. The response speed may slow down or the lighting may fail at low temperatures. As the liquid crystal is destroyed at high temperatures, never leave the unit in a car which is exposed to direct sun light.
4. As exhausted batteries will give an adverse effect to the unit, replace them without delay. (If the battery is exhausted, the display of the liquid crystal will become vague and difficult to look at.)
5. Be careful not to press the liquid crystal display heavily. Otherwise the display may fail.
6. Do not put the unit in the pocket at the back of trousers. The display may be damaged when you take a seat.
7. Wipe any dust with a soft dry cloth.
8. Do not use volatile oils such as thinner or benzine and alcohol for wiping.
9. The liquid crystal may be difficult to look at depending upon the angle. The best angle at which to look is as illustrated in the figure.



SPECIFICATIONS

Accuracy of the clock : Average daily differential within ± 3 secs.
(under normal temperature)

Battery : Two Alkali-Manganese batteries
(LR44 or SR44)

Life of the battery : For clock display
Approx. 6 months on LR44
Approx. 12 months on SR44
For one-hour-game a day
Approx. 6 months on LR44

Working temperature : 10°C to 40°C (50°F to 104°F)

PRINTED IN JAPAN

Nintendo Co., Ltd.